

NV-600 LAN Extender = 100Mbps Ethernet over Telephone Cable

Ethernet Beyond 100 Metres

General Description



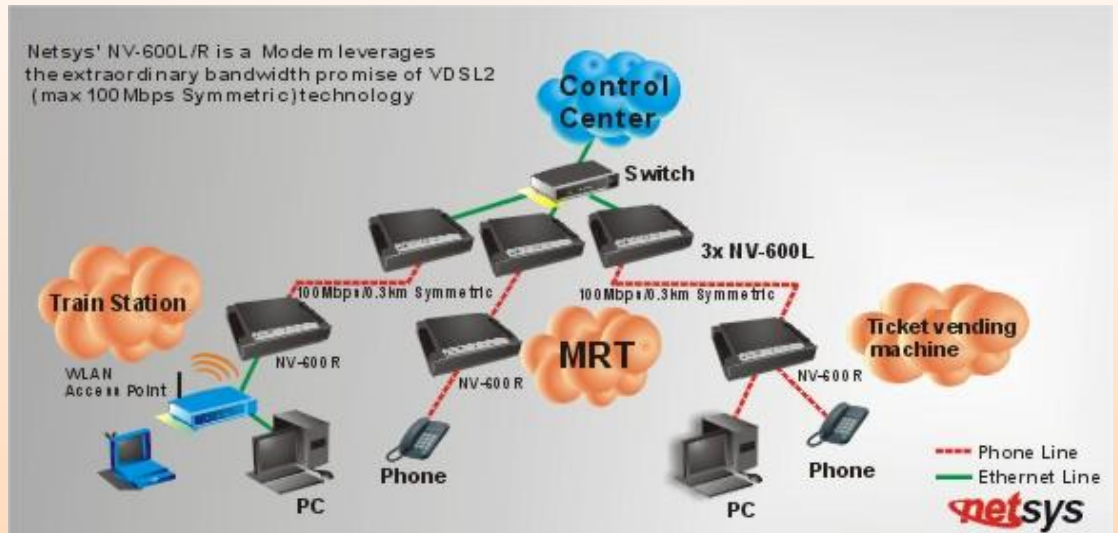
Netsys NV-600 VDSL2 LAN Extenders leverage the extraordinary bandwidth of VDSL2 (max. 100Mbps Symmetric) technology, the next step in the delivery of new high-speed Internet applications to end-users in their homes or offices. Quick, easy and economical to install and maintain, the NV-600L works with the NV-600R over the existing copper wire infrastructure. NV-600L is a CO (Central Office) device.

Netsys NV-600 Series will allow operators worldwide to compete with cable and satellite operators by offering services such as HDTV, VOD, videoconferencing, high speed Internet access and advanced voice services including VoIP, over a standard copper telephone cable.

Netsys NV600 Series is seen by many operators as an ideal accompaniment to a FTTP rollout, where for instance fibre is supplied direct to an apartment block and from there copper cable is used to supply residents with high-speed VDSL2.

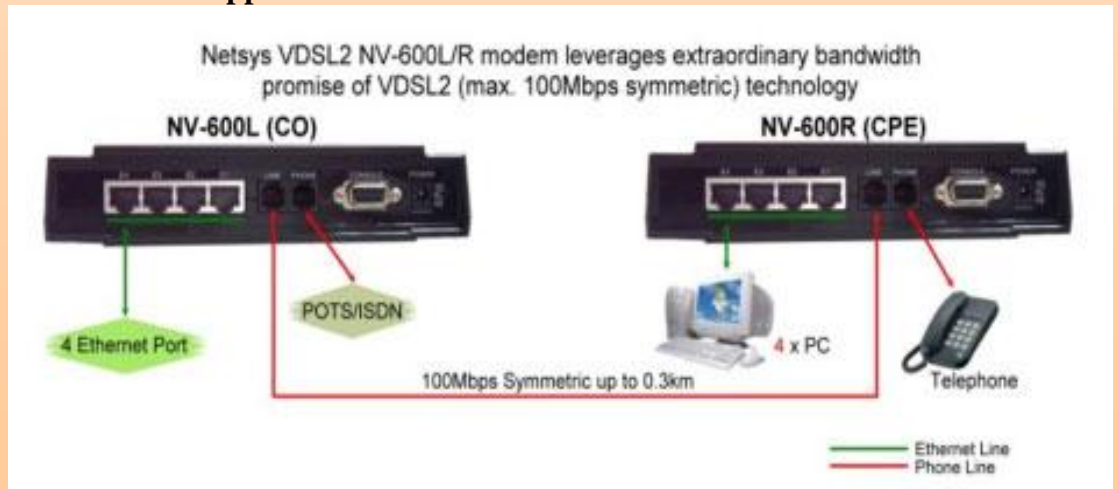
**Symmetric
100 Mbps/0.3 Km**

Application Diagram



**G993.2 VDSL2
standards**

Point-to-Point Application



**Support 8a, 8b, 8c, 8d,
12a, 12b, 17a, 17b, 30a
band profile**

NV-600 Features & Specifications

Ethernet Beyond 100 Metres

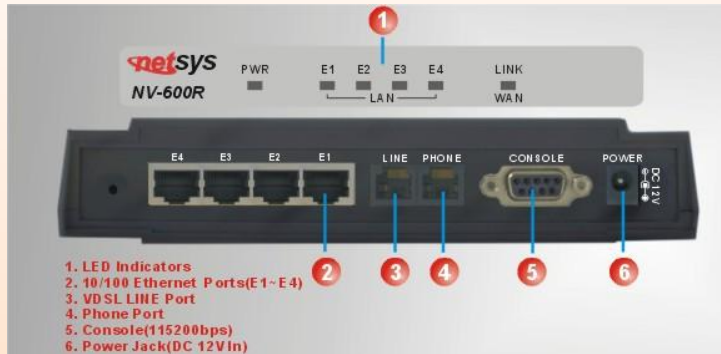


Key Features & Benefits

- Compliant with IEEE 802.3 & 802.3u Ethernet Standards
- Compliant with G993.2 VDSL2 standards
- Provides 4 x 10/100M auto-negotiation RJ-45 Ethernet ports
- Supports Bandwidth set up with 100 Mbps VDSL RJ-11 ports
- POTS / ISDN Splitter port RJ-11 x 1 (Splitter on board)
- Supports auto speed for VDSL2 port
- Supports Web management (HTTP), TFTP, Console (RS232)
- Supports uPnP/PPPoE/NAT/DHCP/DMZ/Firewall
- Supports Route & Switch (Bridge) mode
- Supports Loop back
- Supports SNR indicator for check phone wiring quality
- Supports Interleave delay for Data Error & Noise Against
- Support 8a, 8b, 8c, 8d, 12a, 12b, 17a, 17b, 30a band profile
- Support 997,998 band plan.
- Provides surge protection for VDSL2 port
- EMI Compliant: CE, FCC, VCCI

G993.2 VDSL2 standards

Symmetric 100 Mbps/0.3 Km



Product Specifications

Standard:	IEEE802.3 standard IEEE802.3u standard Compliant G993.2 VDSL2 standard
Interface:	4 * RJ-45 10/100Mbps Ethernet port 1 * RJ-11 connector for VDSL2 1 * RJ-11 connector for POTS/ISDN device
Band Profile:	8a, 8b, 8c, 8d, 12a, 12b, 17a, 17b, 30a
Band Plan:	997, 998
Max. Bandwidth:	Symmetric 100 Mbps / 0.3 Km
LED indication:	Power LED Link/Active Status for Ethernet port * 4 Link LED for VDSL port
Switch method:	Store and forward
Console port:	RS-232C/115200bps
Flow control:	Full duplex: IEEE 802.3x Half duplex: Back pressure
Typical Power Consumption:	6.12W
Operating Temperature:	0°C ~ 50°C (32°F ~ 122°F)
Storage Temperature:	-20°C ~ 65°C (-4°F ~ 149°F)
Humidity:	10 to 90% (non-condensing)
Dimensions:	184 x 146 x 40 mm (7.2" x 5.74" x 1.57")
Chipsets:	Infineon MIPS ADM5120P Infineon VINAX

Support 8a, 8b, 8c, 8d, 12a, 12b, 17a, 17b, 30a band profile